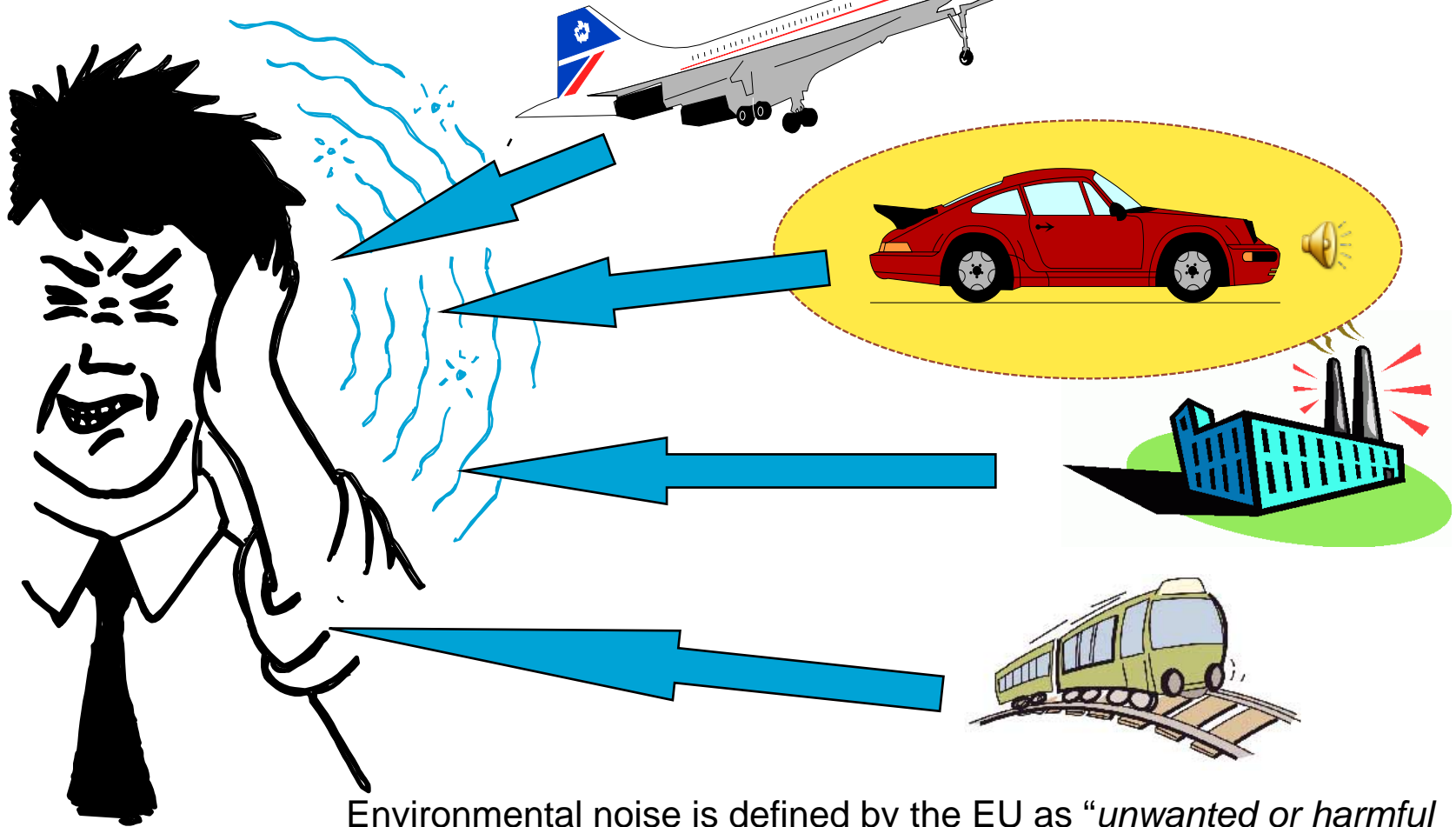


Environmental noise is defined by the EU as “*unwanted or harmful outdoor sound created by human activities, including noise emitted by means of transport and sites of industrial activity*”

Image Source :
Bruel & Kjaer



Environmental noise is defined by the EU as *“unwanted or harmful outdoor sound created by human activities, including noise emitted by means of transport and sites of industrial activity”*



The Decibel Scale

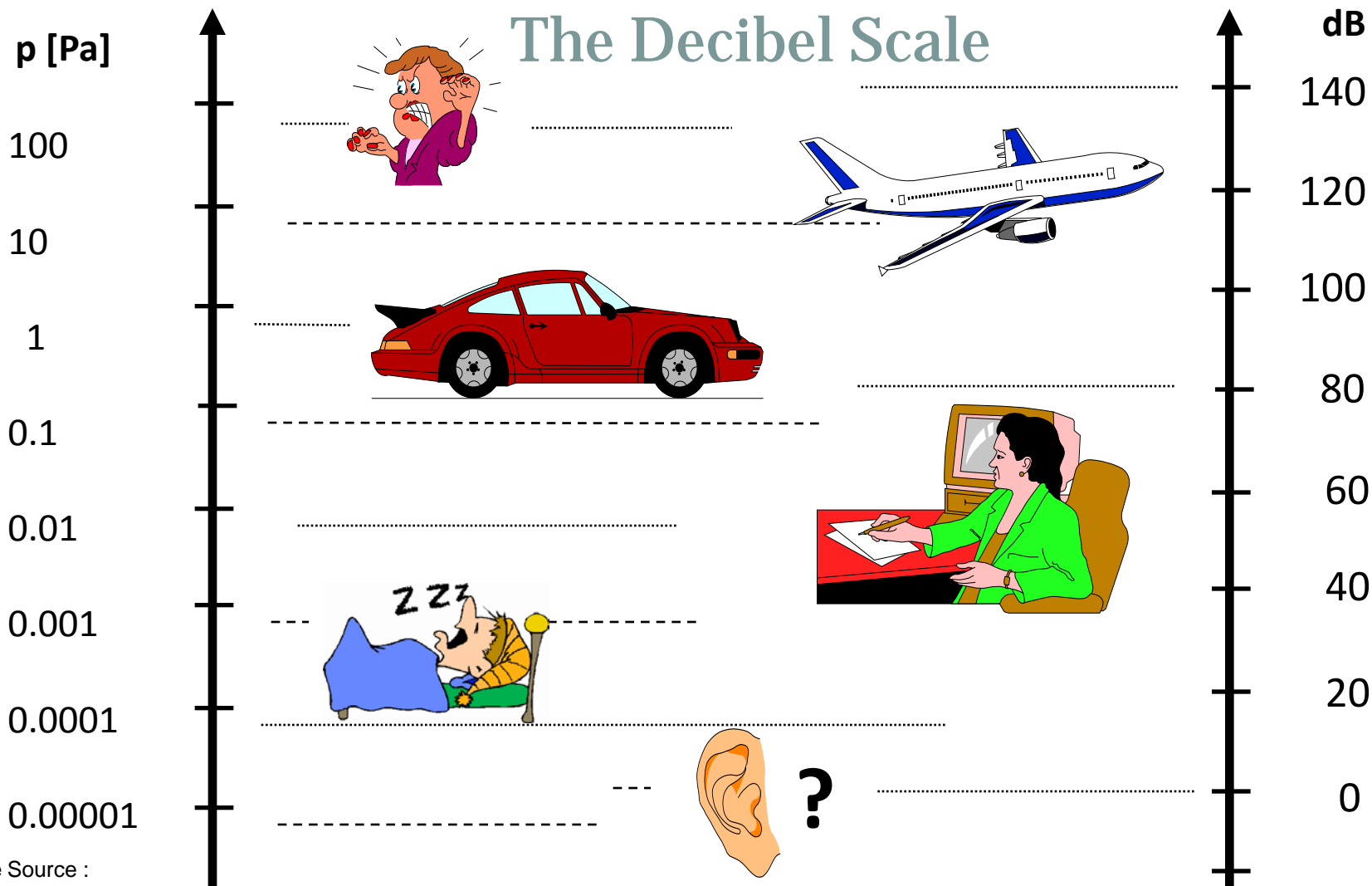
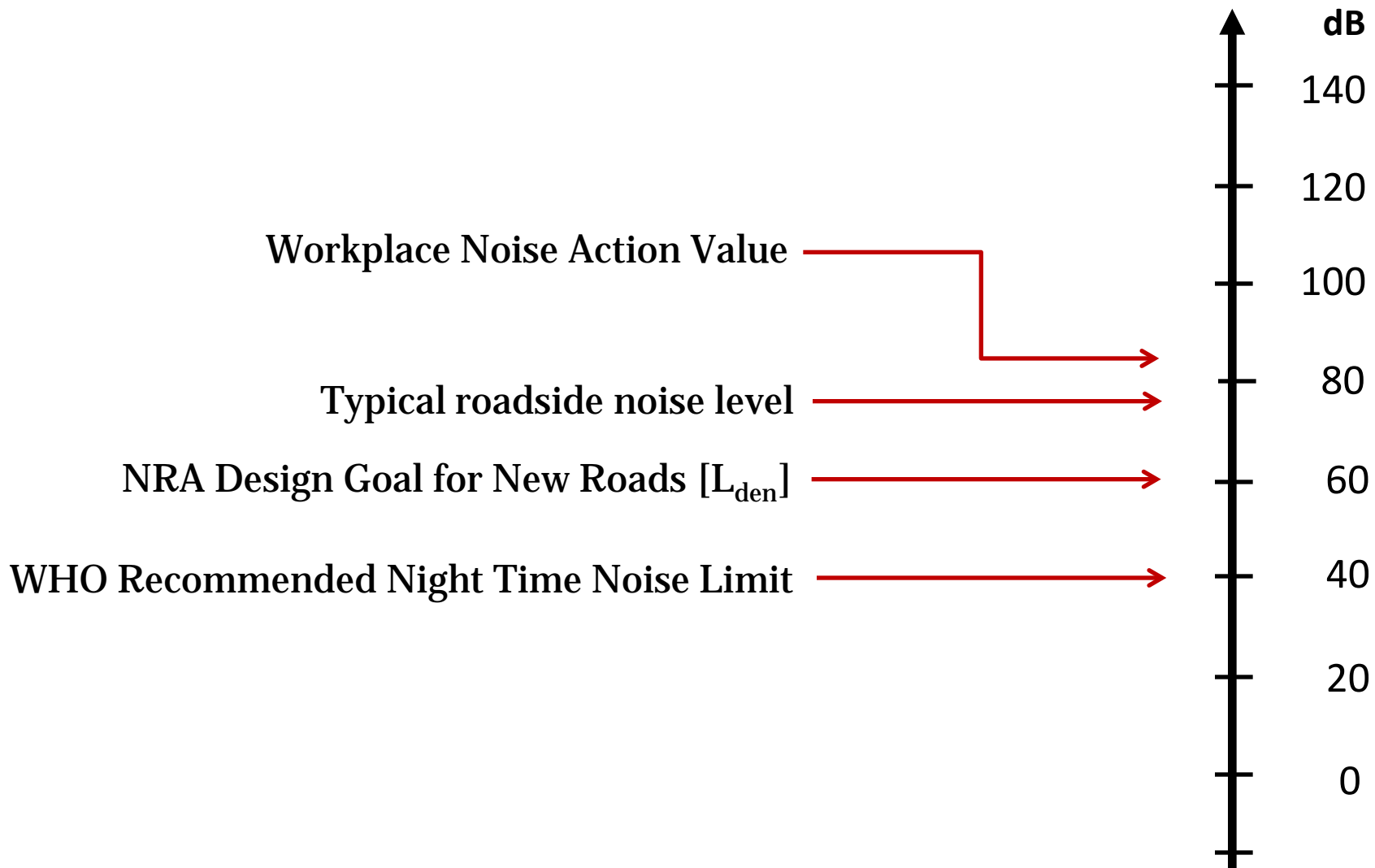


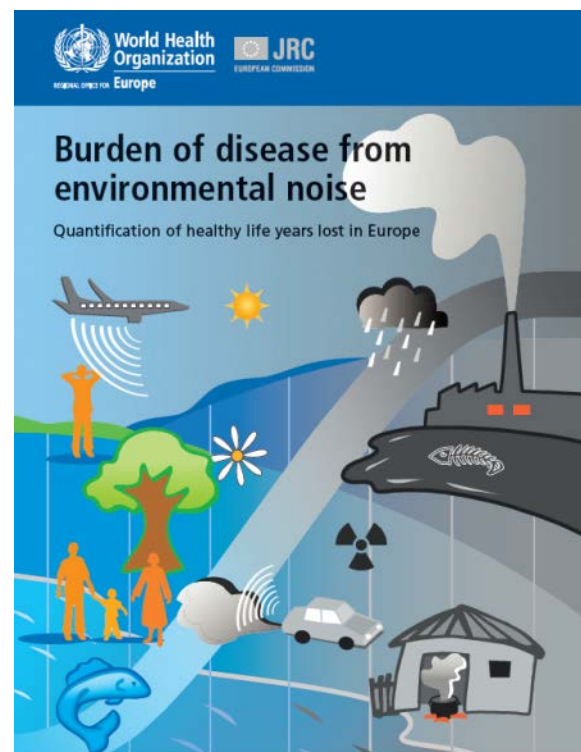
Image Source :
Bruel & Kjaer





Adverse Effects of Exposure to Noise

- **Sleep Deprivation**
 - Reduced productivity in adults
- **Annoyance**
 - Reduced quality of life
- **Auditory Impairments**
- **Cardiovascular Effects**
- **Children are particularly susceptible**
 - Reduced cognitive development



*World Health Organisation, (2011)



Some Statistics....

- **Results from Exposure Estimates (2007)**
 - Approx 13% of the population of 27 EU Member States
 - Road Traffic Noise is by the far the most dominant source
 - 40 million people within agglomerations exposed >50 dB(A) at night
 - 25 million outside agglomerations exposed >50 dB(A) at night

- **World Health Organisation**
 - 40dB(A) : Recommended Night-time Noise Limit
 - 1 Million healthy life years lost each year

- **European Commission**
 - Costs of noise from road and rail traffic - €40 Billion a year



Legislation

- **EU Directive 2002/49/EC**
 - **Strategic Noise Maps & Noise Action Plans**
 - **Major Cities**
 - **Major Roads**
 - **Major Railways**
 - **Major Airports**

- **Environmental Noise Regulations (S.I. No. 140 of 2006)**
 - **1st Phase Completed in 2007**
 - **2nd Phase now finished**

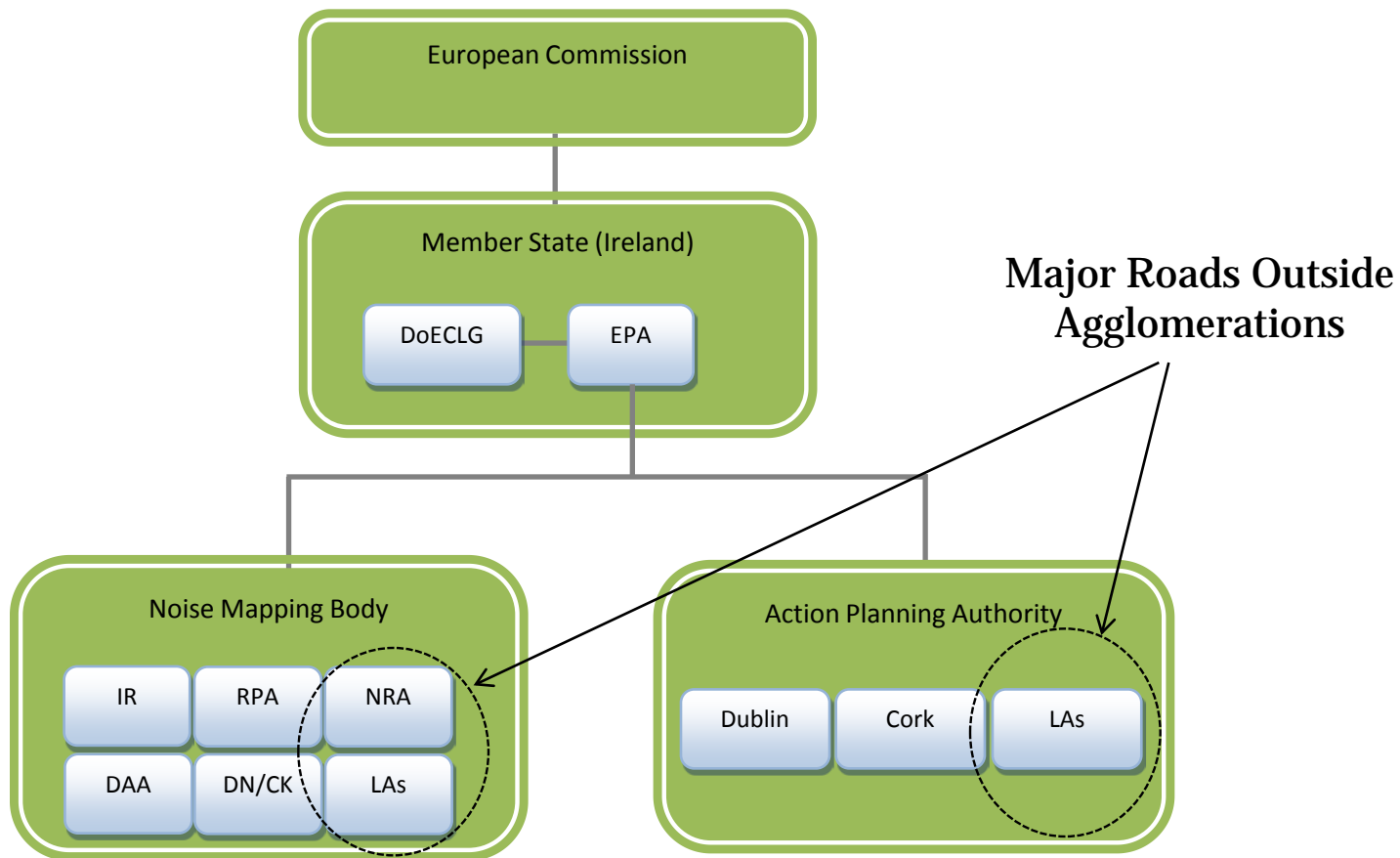


Noise Mapping - 2007

- AADT : 16,000
- 650 km of major roads

Noise Mapping - 2012

- AADT : 8,000
- Over 3,000 km of major roads

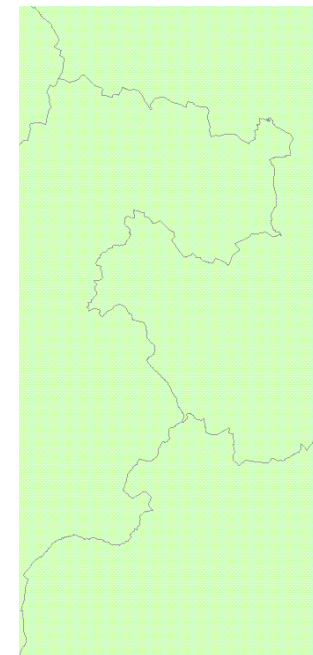
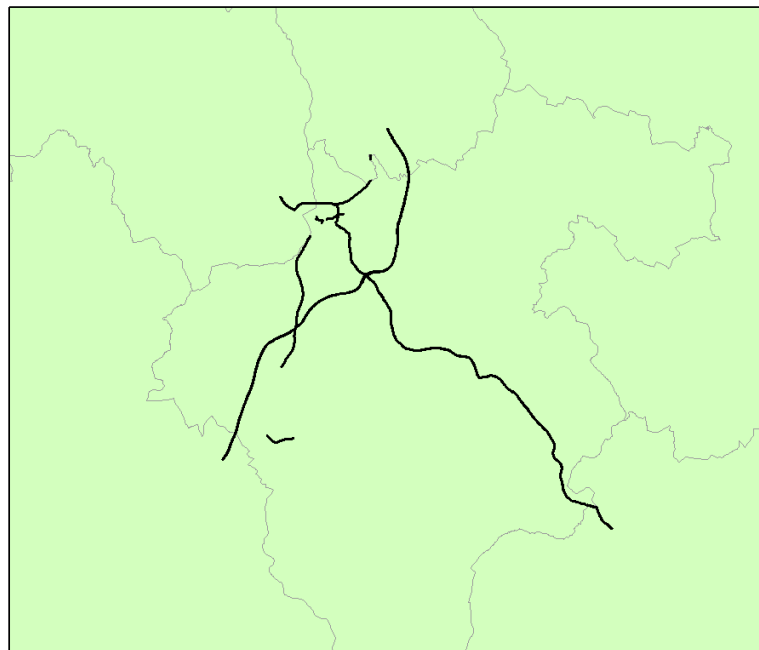
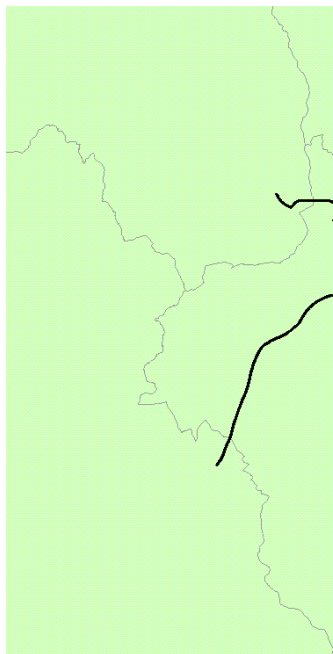




Centralised Approach to Noise Mapping

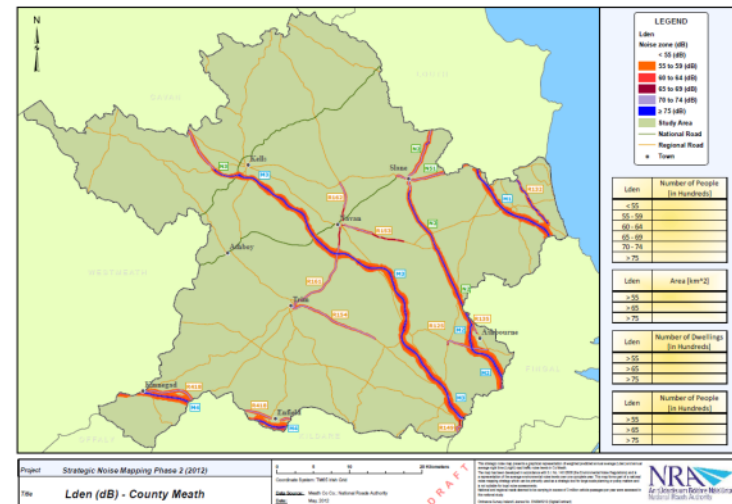
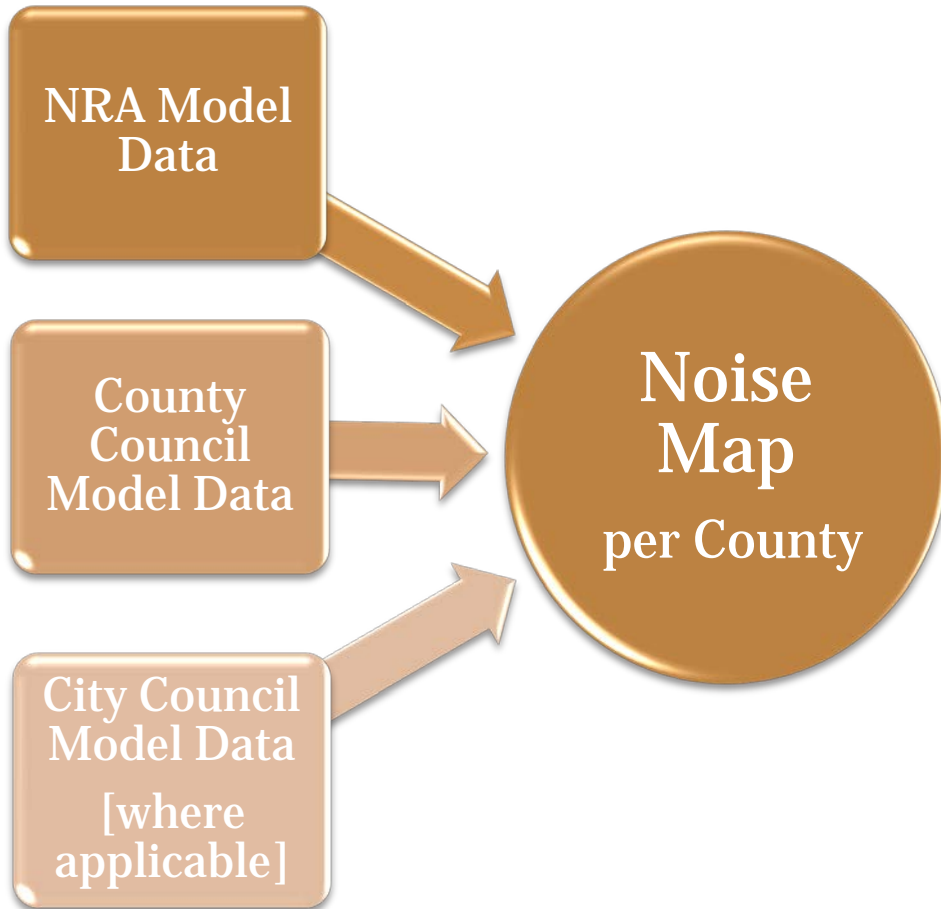
National Roads - Approx 70km

Non-National Roads - Approx 17km





Centralised Approach to Noise Mapping





Main Input Datasets - National Roads

- **Roads**
 - Traffic Count, Composition, Speed, Road Surface, Texture Depth
- **Topography**
 - Contour Datasets, Ground Cover
- **Buildings**
 - Location, Height, Residential/Commercial, Occupied/Unoccupied
- **Barriers**
 - Location, Height



Roads

- **Traffic Counts, Composition**
 - National Traffic Model
 - Automatic Traffic Counters
- **Speeds**
 - Signposted Speed Limit
- **Road Surface**
 - Type
 - Texture Depth
- **Road Type**





Ground Model



- **Topography**
 - Aerial LiDAR
 - 2-4 pts per m²
- **Ground Type**
 - Corine Database



Buildings

- **Building Location**
 - OSI Data
 - Aerial LiDAR
- **Building Height**
 - Aerial LiDAR
- **Use**
 - GeoDirectory





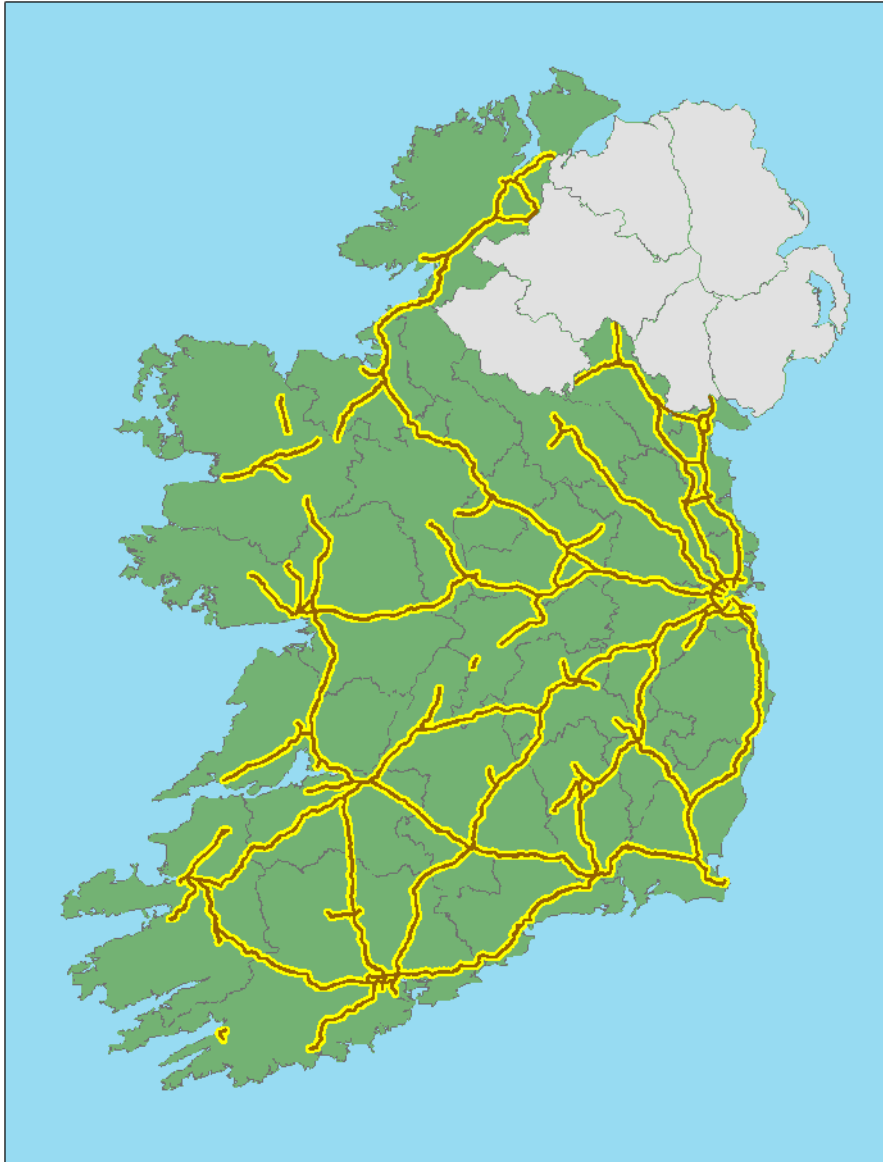
Overall Process

- **Model Preparation**
 - ArcGIS
- **Model Calculation**
 - Predictor v8.1 (8-core Machine)
 - Grid Calculations & Façade Point Calculations
 - All Calculations performed over tiles (10km x 10km)
- **Results Analysis**
 - ArcGIS
- **Exposure Assessment**
 - GeoDirectory, Small Area Datasets (Census 2011)



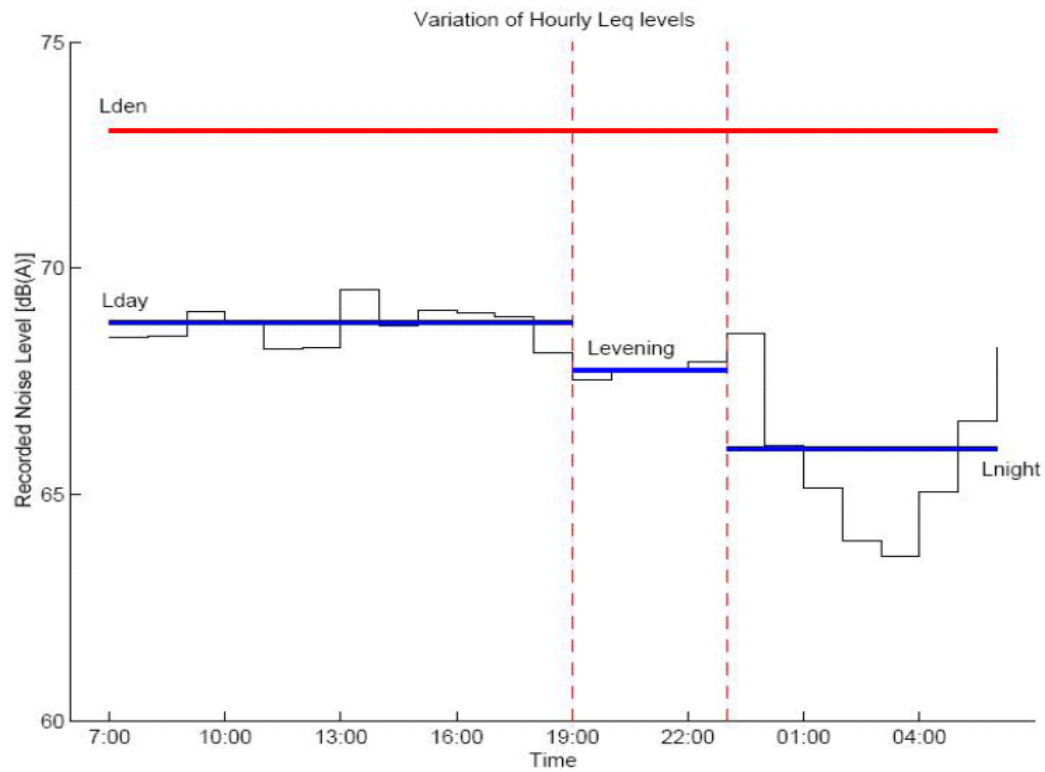
Results

- **Completed September 2012**
 - L_{den}
 - L_{night}
 - Façade Points (Most Exposed)
- **Population Exposure**
 - County by County
 - City Councils reported separately
- **Next Steps:**
 - Dissemination
 - Action Plans
 - Calculation Method





What is L_{den} ?



- Home
- About Us
- Road Scheme Activity
- Network Management
- Public Private Partnership
- Environment**
 - Environmental Planning Guidelines
 - Environmental Construction Guidelines
 - Environmental Operating Plan Guidelines
 - Contact Information
 - Noise Maps
 - WHAT IS A NOISE MAP?**
 - Strategic Noise Maps
 - Further Information
- Archaeology
- Publications
- General Tolling Information
- Tenders & Recruitment
- Research



Search: --Quick Links--

Google™ Custom Search

You are here: > Home > Environment > Noise Maps > What is a Noise Map?

What is a Noise Map?

A noise map is a graphical representation of the predicted situation with regards to noise in a particular area with different colours representing different noise levels in decibels [dB(A)].

To develop a noise map a number of variables must be determined in order to correctly represent the amount of noise generated at the source, i.e. by traffic driving on the road. The noise level at the source is primarily influenced by the speed at which traffic is travelling at, the overall quantity of vehicles in the traffic flow, the proportion of heavy commercial vehicles (HCVs) in the flow and the type of road surface in the area.

The manner in which the noise propagates away from the source must then be calculated which involves determining the reduction in noise level as it propagates from the source. Distance, ground cover and the presence of barriers such as walls, noise barriers, etc, will all influence the level of noise attenuation.

All noise maps are presented in terms of two noise indicators L_{den} and L_{night} .

L_{den} is the day-evening-night noise indicator and it represents the noise indicator for overall annoyance. It is 'weighted' to account for extra annoyance in the evening and night periods.

L_{night} is the night time noise indicator and is used in the assessment of sleep disturbance

These indicators are based on year long averages of the day (07:00-19:00), evening (19:00 - 23:00) and night (23:00-0700) time periods.

- Home
- About Us
- Road Scheme Activity
- Network Management
- Publications
- Environment
 - Guidelines
 - Environmental Construction Guidelines
 - Environmental Operating Plan Guidelines
 - Contact Information
 - Noise Maps
 - WHAT IS A NOISE MAP?
 - Strategic Noise Maps
 - Further Information
 - Archaeology
- Publications
- General Tolling Information
- Tenders & Recruitment
- Research



Search: --Quick Links-- Custom Search

You are here: > Home > Environment > Noise Maps > What is a Noise Map?

What is a Noise Map?

A noise map is a graphical representation of the predicted situation with regards to noise in

www.nra.ie/Environment/Noisemaps

noise level at the source is primarily influenced by the speed at which traffic is travelling at, the overall quantity of vehicles in the traffic flow, the proportion of heavy commercial vehicles (HCVs) in the flow and the type of road surface in the area.

The manner in which the noise propagates away from the source must then be calculated which involves determining the reduction in noise level as it propagates from the source. Distance, ground cover and the presence of barriers such as walls, noise barriers, etc. will all influence the level of noise attenuation.

All noise maps are presented in terms of two noise indicators L_{den} and L_{night} .

L_{den} is the day-evening-night noise indicator and it represents the noise indicator for overall annoyance. It is 'weighted' to account for extra annoyance in the evening and night periods

L_{night} is the night time noise indicator and is used in the assessment of sleep disturbance

These indicators are based on year long averages of the day (07.00-19.00), evening (19.00 - 23.00) and night (23.00-0700) time periods.



LEGEND

Lden
Noise zone (dB)
 < 55 (dB)
 55 to 59 (dB)
 60 to 64 (dB)
 65 to 69 (dB)
 70 to 74 (dB)
 ≥ 75 (dB)

Study Area
 National Road
 Regional Road
 Town

L _{den}	Approximate Number of People	
	Galway City	Galway County
< 55	54,507	17,730
55 - 59	5,772	3,769
60 - 64	4,533	2,732
65 - 69	4,845	2,918
70 - 74	1,382	574
> 75	0	6

L _{den}	Approximate Area [km ²]	
	Galway City	Galway County
> 55	12	99
> 65	3	19
> 75	0.1	2

L _{den}	Approximate Number of Dwellings	
	Galway City	Galway County
> 55	7,733	4,188
> 65	3,015	1,497
> 75	0	2

L _{den}	Approximate Number of People	
	Galway City	Galway County
> 55	16,532	9,998
> 65	6,227	3,498
> 75	0	6

Project Strategic Noise Mapping Phase 2 (2012)

Title Lden (dB) - County Galway & Galway City

0 5 10 20 Kilometers

Coordinate System: TM65 Irish Grid

Data Source: Galway Co. Co., Galway City Co., National Roads Authority

Date: September, 2012

This strategic noise map presents a graphical representation of weighted predicted annual average (L_{den}) and annual average night time (L_{night}) road traffic noise levels in Co Galway & Galway City. The map has been developed in accordance with S.I. No. 140/2006 (the Environmental Noise Regulations) and is a representation of the average environmental noise levels over one complete year. This map forms part of a national noise mapping strategy which can be primarily used as a strategic tool for large scale planning or policy matters and is not suitable for local noise assessments. National and regional roads deemed to be carrying in excess of 3 million vehicle passages per year were assessed in this national study.

Ordnance Survey Ireland, Licence No. EN094510 (DigitalContract)
 © Ordnance Survey Ireland/Government of Ireland





LEGEND

Lnight
Noise zone (dB)

- < 45 (dB)
- 45 to 49 (dB)
- 50 to 54 (dB)
- 55 to 59 (dB)
- 60 to 64 (dB)
- 65 to 69 (dB)
- ≥ 70 (dB)

Study Area

National Road

Regional Road

Town

Lnight	Approximate Number of People	
	Galway City	Galway County
< 50	59,179	20,873
50 - 54	4,628	2,721
55 - 59	5,573	3,219
60 - 64	1,659	897
65 - 69	0	18
> 70	0	0

Lnight	Approximate Area [km ²]	
	Galway City	Galway County
> 50	7	53
> 60	2	10
> 70	0	0

Lnight	Approximate Number of Dwellings	
	Galway City	Galway County
> 50	5,570	2,894
> 60	818	400
> 70	0	0

Lnight	Approximate Number of People	
	Galway City	Galway County
> 50	11,860	6,855
> 60	1,659	915
> 70	0	0

Project Strategic Noise Mapping Phase 2 (2012)

Title Lnight (dB) - County Galway & Galway City

0 5 10 20 Kilometers

Coordinate System: TM65 Irish Grid

Data Source: Galway Co Co.; Galway City Co.; National Roads Authority

Date: September, 2012

This strategic noise map presents a graphical representation of weighted predicted annual average (L_{den}) and annual average night time (L_{night}) road traffic noise levels in Co Galway & Galway City. The map has been developed in accordance with S.I. No. 140/2008 (the Environmental Noise Regulations) and is a representation of the average environmental noise levels over one complete year. This map forms part of a national noise mapping strategy which can be primarily used as a strategic tool for large scale planning or policy matters and is not suitable for local noise assessments. National and regional roads deemed to be carrying in excess of 3 million vehicle passages per year were assessed in this national study.

Ordnance Survey Ireland Licence No. EN0065212 (DigitalContract)
© Ordnance Survey Ireland/Government of Ireland





LEGEND

Lden
Noise zone (dB)

- < 55 (dB)
- 55 to 59 (dB)
- 60 to 64 (dB)
- 65 to 69 (dB)
- 70 to 74 (dB)
- ≥ 75 (dB)

— Study Area
— National Road
— Regional Road
● Town

L _{den}	Approximate Number of People
< 55	31,303
55 - 59	8,879
60 - 64	4,344
65 - 69	3,059
70 - 74	1,844
> 75	77

L _{den}	Approximate Area [km ²]
> 55	150
> 65	30
> 75	5

L _{den}	Approximate Number of Dwellings
> 55	7,703
> 65	2,346
> 75	33

L _{den}	Approximate Number of People
> 55	18,203
> 65	4,980
> 75	77

Project Strategic Noise Mapping Phase 2 (2012)

Title Lden (dB) - County Cork

0 5 10 20 Kilometers

Coordinate System: TM65 Irish Grid

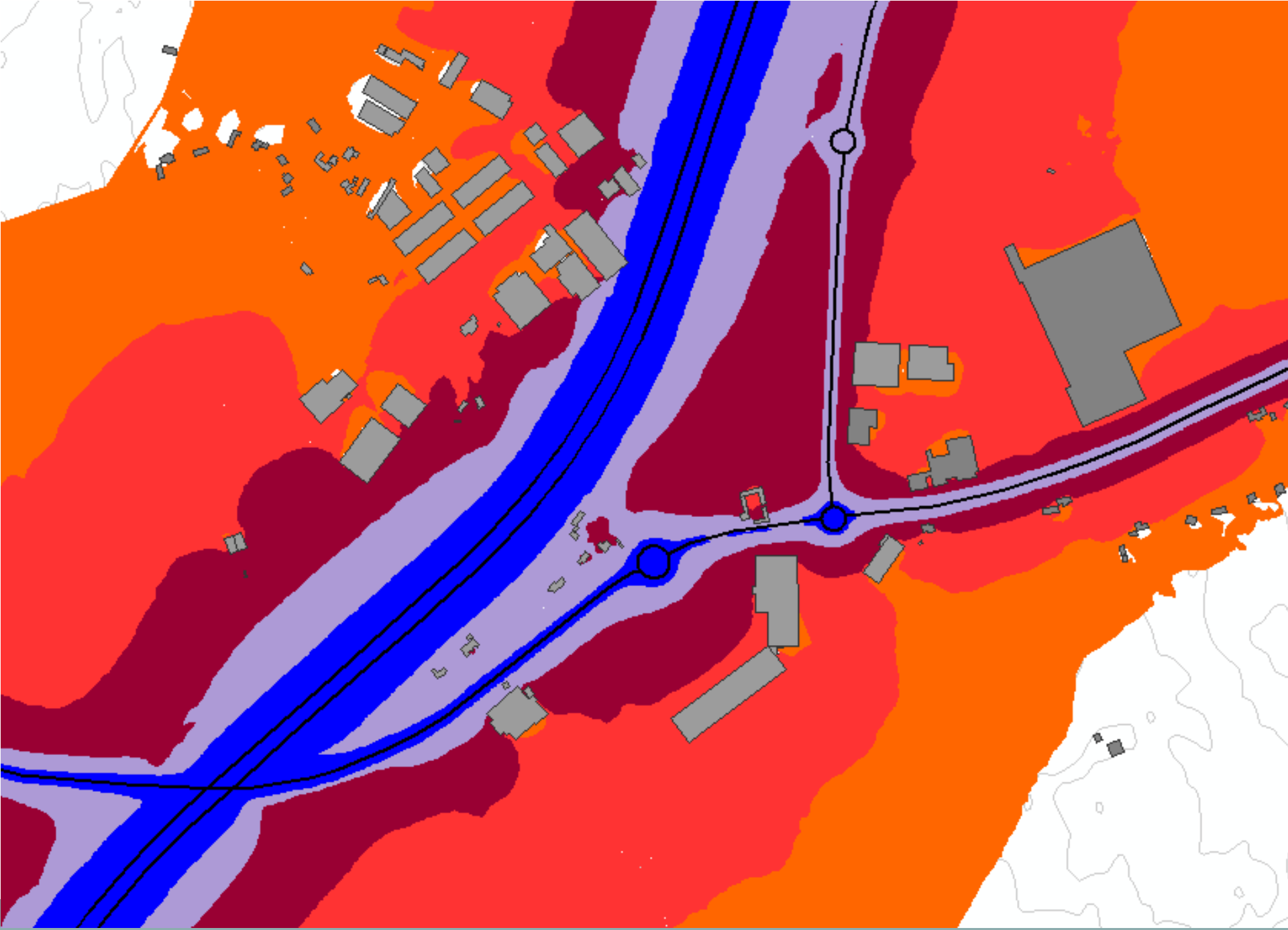
Data Source: Cork Co Co.; National Roads Authority

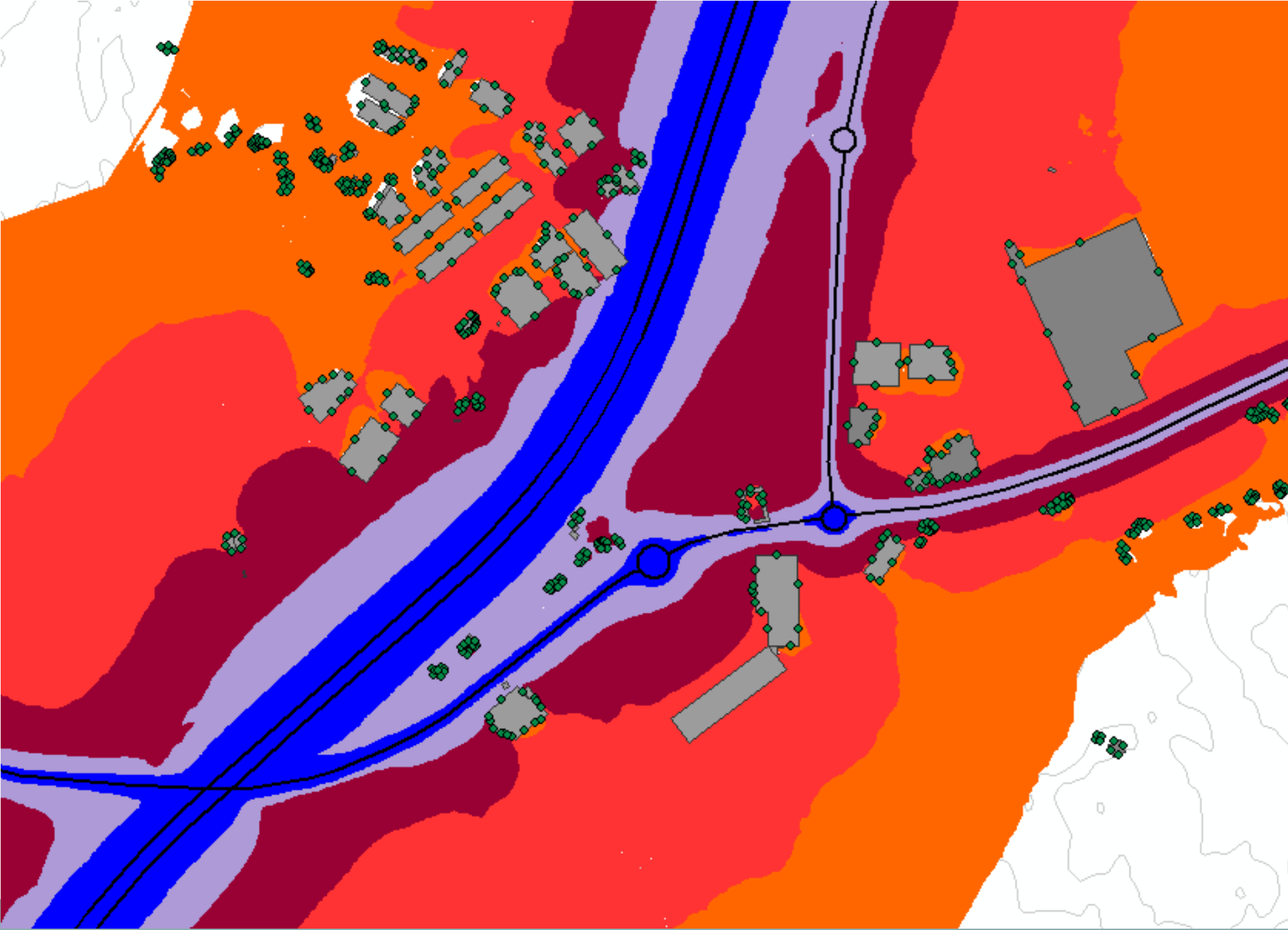
Date: September, 2012

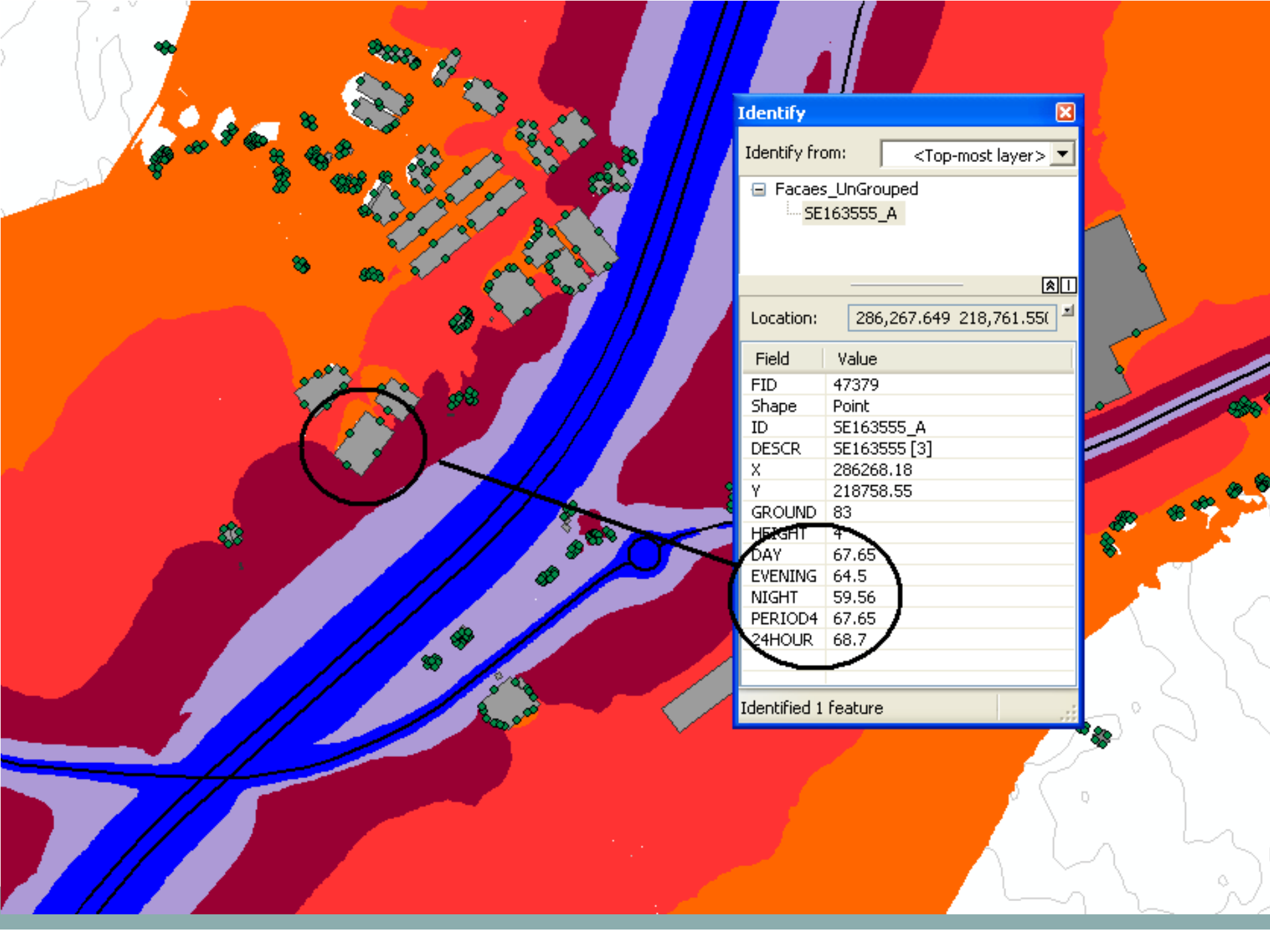
This strategic noise map presents a graphical representation of weighted predicted annual average (L_{den}) and annual average night time (L_{night}) road traffic noise levels in Co Cork. The map has been developed in accordance with S.I. No. 140/2006 (the Environmental Noise Regulations) and is a representation of the average environmental noise levels over one complete year. This map forms part of a national noise mapping strategy which can be primarily used as a strategic tool for large scale planning or policy making and is not suitable for local noise assessments. National and regional roads deemed to be carrying in excess of 3 million vehicle passages per year were assessed in this national study.

Ordnance Survey Ireland Licence No. EN0065212 (Digital Contract)
© Ordnance Survey Ireland/Government of Ireland









Identify

Identify from: <Top-most layer >

- Facaes_UnGrouped
 - SE163555_A

Location: 286,267.649 218,761.55

Field	Value
FID	47379
Shape	Point
ID	SE163555_A
DESCR	SE163555 [3]
X	286268.18
Y	218758.55
GROUND	83
HEIGHT	4
DAY	67.65
EVENING	64.5
NIGHT	59.56
PERIOD4	67.65
24HOUR	68.7

Identified 1 feature



National Exposure Estimates

- Results from National Exposure Estimates:
 - Almost 250,000 people exposed to noise levels $>55\text{dB } L_{\text{den}}$
 - Almost 140,000 people exposed to noise levels $>60\text{dB } L_{\text{den}}$
 - Almost 20,000 people exposed to noise levels $>70\text{dB } L_{\text{den}}$
 - Almost 157,000 people exposed to noise levels $>50\text{dB } L_{\text{night}}$



Using an Online Presentation Tool

The screenshot displays a web browser window titled "ArcGIS - Roscommon Noise Map 2012". The address bar shows the URL: <http://www.arcgisonline.com/home/webmap/viewer.html?webmap=c4bccc0117a94fae8f1b314a1ef7f591be&extent=-9.6161,53.2246,-6.5399,54.1645>. The browser interface includes a menu bar (File, Edit, View, Favorites, Tools, Help) and a toolbar with options like Save, Share, Print, Measure, and Bookmarks. A search bar is located at the top right of the map area.

The main content area features a map of Ireland with noise contours overlaid. The map is titled "Roscommon Noise Map 2012" and includes a sidebar with the following information:

- Roscommon Noise Map 2012**
- Strategic Noise Mapping for Major Roads in Roscommon 2012
- Web Map by bk15
- Last Modified: May 4, 2012
- 0 ratings, 0 comments, 22 views
- More Details...
- Open this map in: ArcGIS Explorer Online
- Make your own map: Add to this map, Make a new map

The map shows noise contours around major roads and cities in Ireland, including Dublin, Galway, and Roscommon. A scale bar at the bottom left indicates 0, 20, and 40 miles. The Esri logo is visible in the bottom right corner of the map area.

The Windows taskbar at the bottom shows the following open applications: start, Inbox - Micro..., NoiseMapIpsd..., Results for Ana..., Adobe Res..., ArcGIS - Rosco..., untitled - Paint, Search Desktop, and Internet. The system clock shows 15:44.



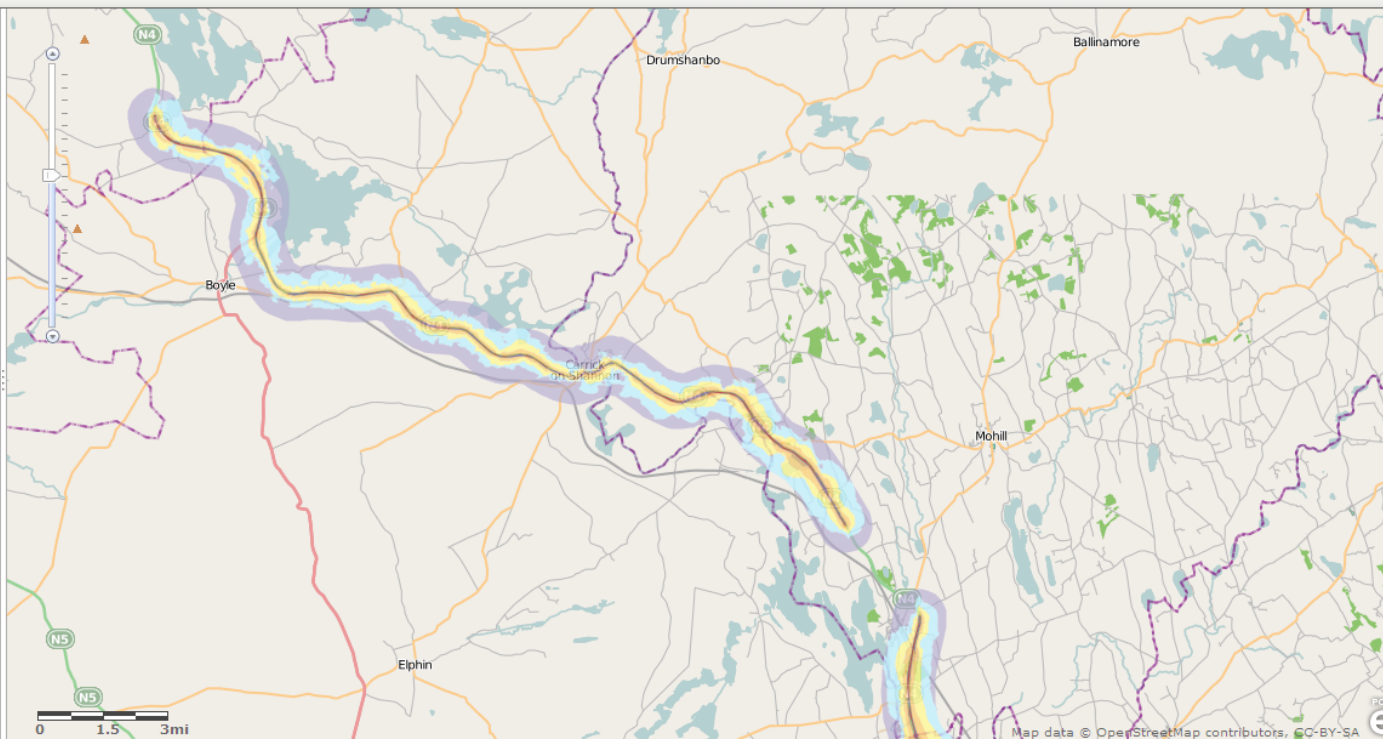
ArcGIS Roscommon Noise Map 2012

New Map My Content Help

Details Add Basemap Save Share Print Measure Bookmarks Find address or place

Roscommon Noise Map 2012
Strategic Noise Mapping for Major Roads in Roscommon 2012
Web Map by bk15
Last Modified: May 4, 2012
☆☆☆☆☆ (0 ratings, 0 comments, 22 views)

More Details...
Open this map in:
ArcGIS Explorer Online
Make your own map
Add to this map
Make a new map





http://www.arcgis.com/home/webmap/viewer.html?webmap=c4bbcc0117a94fae8f1b314a1ef7f591 ArcGIS - Roscommon Nois...

File Edit View Favorites Tools Help

ArcGIS Roscommon Noise Map 2012

New Map My Content Help Sign Out

Details Add Basemap Save Share Print Measure Bookmarks Find address or place

Roscommon Noise Map 2012

Strategic Noise Mapping for Major Roads in Roscommon 2012

Web Map by bk15
Last Modified: May 4, 2012
0 ratings, 0 comments, 25 views

More Details...

Open this map in:
ArcGIS Explorer Online

Make your own map
Add to this map
Make a new map

Esri.com Terms of Use Privacy Contact Us Report Abuse

Map data © OpenStreetMap contributors, CC-BY-SA

esri

15:54
25/07/2012



What's Next....

- **Action Plans must be completed by all Local Authorities by mid 2013**
 - **Preserve areas that have a 'good' noise environment**
 - **Improve those areas identified as having an unacceptable noise environment**
 - **Noise 'hotspots'**
- **Process must be repeated in 2017!**
 - **This will involve a new calculation method – 'CNOSSOS-EU'**



Thank you for your attention

Any Questions?

Contact Details:

eking@nra.ie